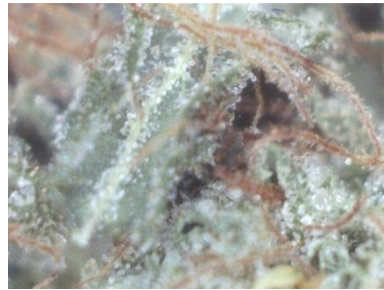




# Certification of Medical Cannabis

We certify that this cannabis sample has been prescreened by **MTAKB007** on **Friday, December 30, 2011** for safe medical administration. Our prescreening results assist in the administration of this cannabis by insuring it is safe from harmful and possibly deadly contaminants. Our state of the art equipment tests parts per billion to detect chemical compounds that enable this cannabis to be administered for specific illnesses and serious conditions.

Administrable by:  
**The Med Joint**

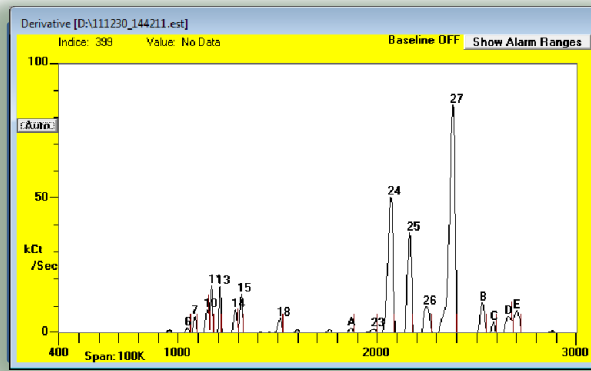


**Pitbull**

**ID:MTA2228MJ**

## Identification Certificate

### Genetic Fingerprint I.D. Card



Captured above is this cannabis sample's unique Chemical Signature drafted by it's genome, environment and farming practices.

### Bacteria Analysis

Mold	Pass
Fungus	Pass
Mildew	Pass

### Chemical Analysis

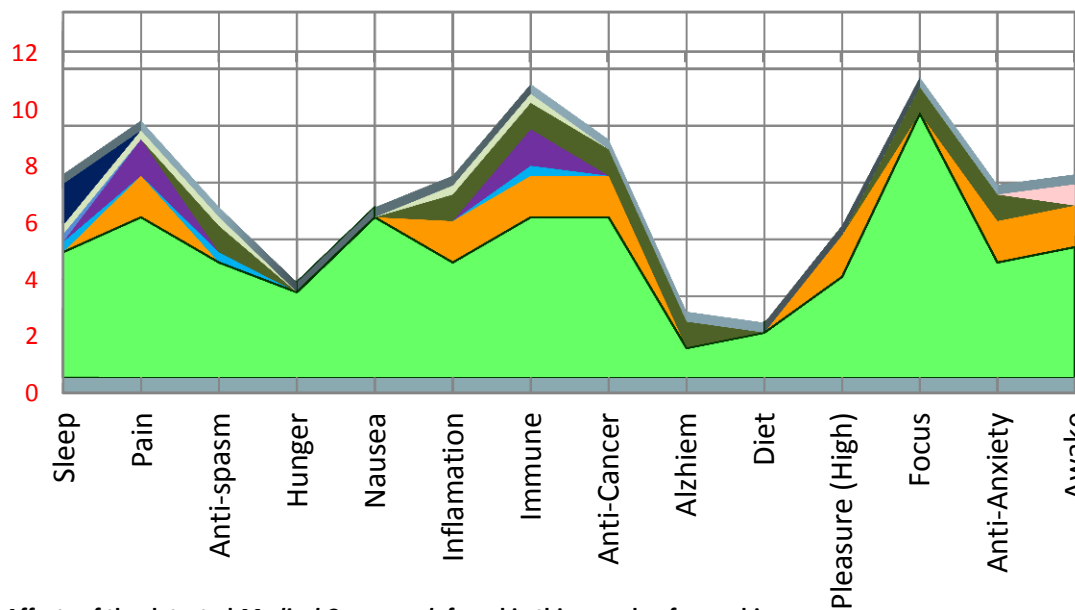
Pesticide	Pass
-----------	------

### Potency Analysis

CBD	3.4%
THC	32.9%
CBN	2.6%

## Pharmacological Effects Analysis

Qualitative Scale of Effects (1-10) Ten being the best medical cannabis ever tested.



Acetophenone	0.3%
Terpinolene	0.0%
Cathinone	0.9%
Borneol	0.4%
Camphor	1.5%
Terpinoel	0.0%
Limonene	1.2%
Nerolidol	0.0%
Beta-caryophyll	0.0%
Alpha-caryophyl	0.0%
Linlool	0.0%
Caryophyllene	0.0%
Phytol	0.4%
Mycrene	1.7%
Alpha pinene	1.1%
Cannabinoids	43.0%

Affects of the detected *Medical Compounds* found in this sample of cannabis.

MTA uses portable state of the art G.C.- S.A.W. Surface Acoustic Wave technology, along with a scientific low pressure vapor testing method to detect the terpinoids, flavinoids, and cannabinoids in parts per billion. Our on site testing produces accurate test results in almost real time, so it can be utilized as a tool in selecting quality medication. Please feel free to call 1-855-751-2500 with any questions.

Change

\*Testers id

\*Administration location name

1. Change Picture
2. Change Strain Name
3. Delete Graph
4. Delete Terpiniod Chart
5. Save as sample name & number on publisher
6. F10 chart off of result
7. Paste chart on publisher
8. Add data on exell
9. Copy terp chart and paste
10. Copy cannabinoid THC CBN CBD and paste
11. Save as... check name
12. 12 print